

ARCHITECT ANTE VRBAN

Historic location dating from 1821.  
Today gets redefined to a new era of elegance and luxury.

Welcome to  
16 Custom Architect Ante Vrban residential interiors

for

BUSINESS RESIDENTIAL BUILDING ROVINJ

ARCHITECT ANTE VRBAN

for

S-II-4 DUPLEX APARTMENT

Total 260,01 m<sup>2</sup>

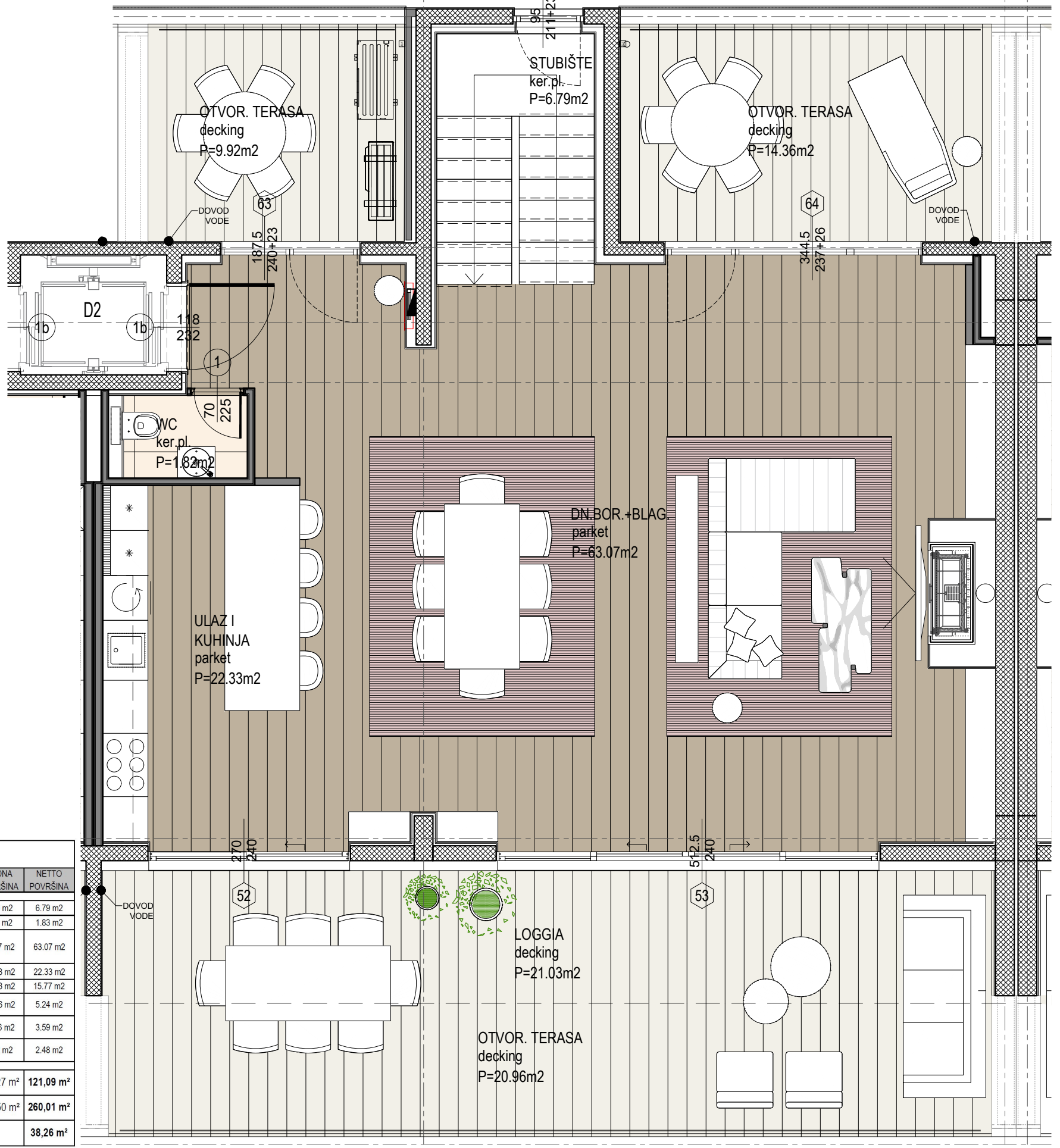
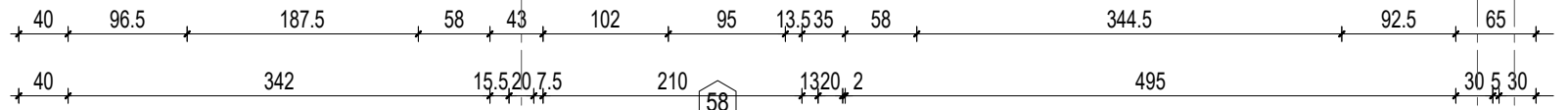
Parking 38,26 m<sup>2</sup>

**DUPLEX APARTMENT**  
**S-II-4 + PM 12**  
**260,01 m<sup>2</sup> + 38,26 m<sup>2</sup>**  
**- 3rd floor**

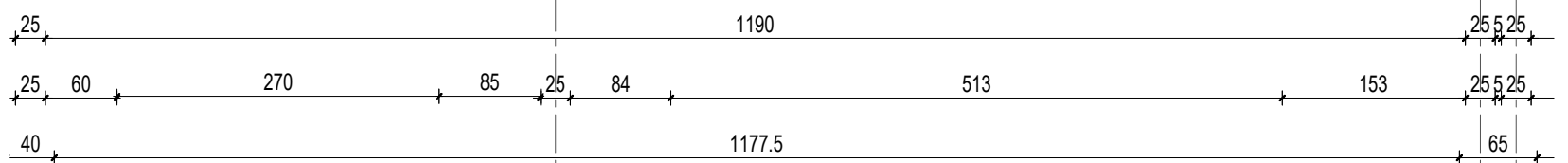


6

7 7



STAN S-II-4 - 3.KAT					
BR.	OPIS PROSTORIJE	PODNA OBLOGA	KOEF.	PODNA POVRŠINA	NETTO POVRŠINA
1	STUBIŠTE	pločice	1,00	6,79 m <sup>2</sup>	6,79 m <sup>2</sup>
2	WC	pločice	1,00	1,82 m <sup>2</sup>	1,83 m <sup>2</sup>
3	DNEVNI BORAVAK + BLAGOVAONICA	parket	1,00	63,07 m <sup>2</sup>	63,07 m <sup>2</sup>
4	ULAZ I KUHINJA	parket	1,00	22,33 m <sup>2</sup>	22,33 m <sup>2</sup>
5	LOGGIA	decking	0,75	21,03 m <sup>2</sup>	15,77 m <sup>2</sup>
6	OTVORENA TERASA 1	decking	0,25	20,96 m <sup>2</sup>	5,24 m <sup>2</sup>
7	OTVORENA TERASA 2	decking	0,25	14,36 m <sup>2</sup>	3,59 m <sup>2</sup>
8	OTVORENA TERASA 3	decking	0,25	9,92 m <sup>2</sup>	2,48 m <sup>2</sup>
STAN S-II-4 - 3.KAT				160,27 m <sup>2</sup>	121,09 m <sup>2</sup>
STAN S-II-4 - 2. I 3.KAT - TOTAL				301,50 m <sup>2</sup>	260,01 m <sup>2</sup>
STAN S-II-4 - PM 12					38,26 m <sup>2</sup>



6

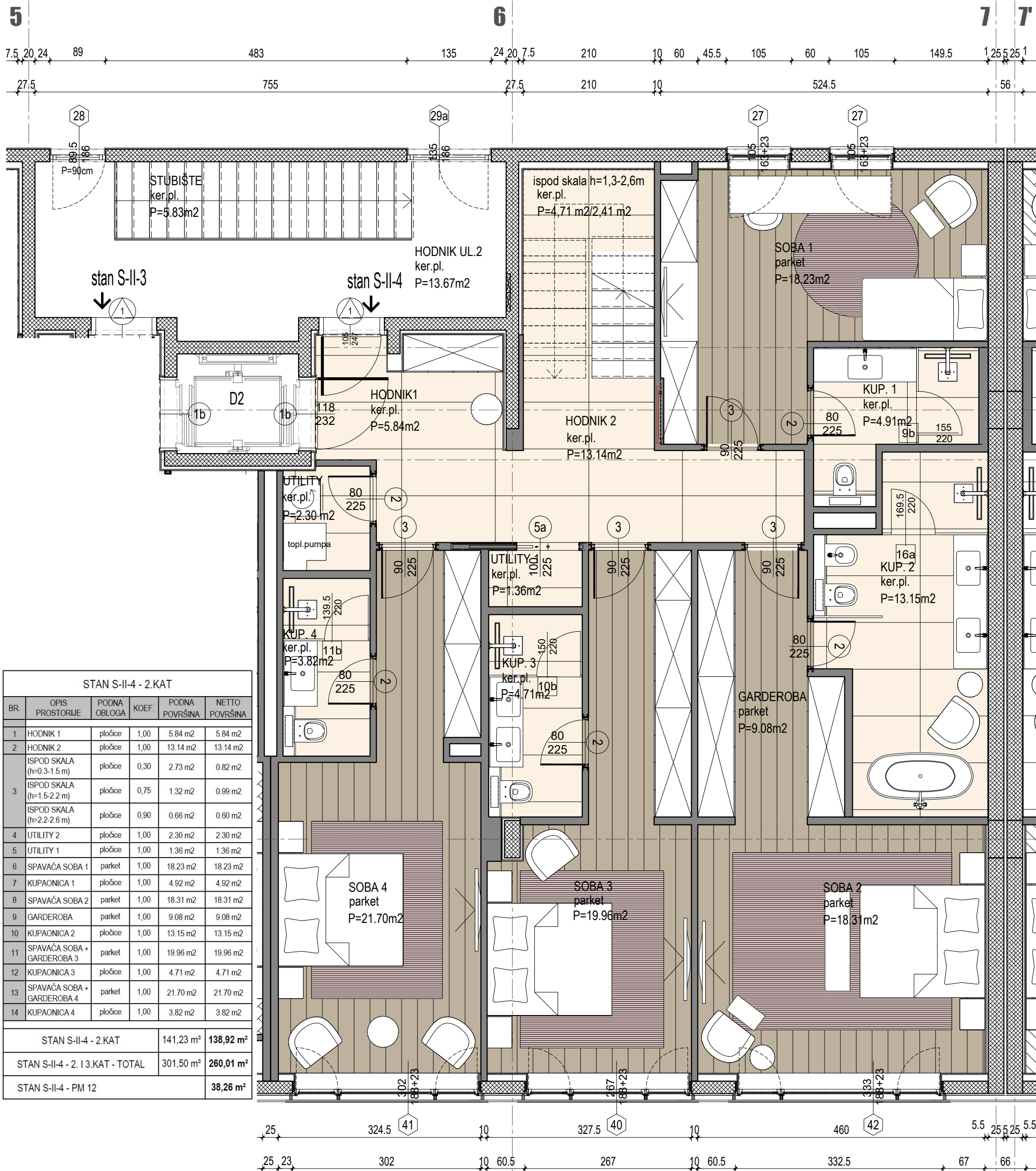
7 7

# DUPLEX APARTMENT

S-II-4 + PM 12

260,01 m<sup>2</sup> + 38,26 m<sup>2</sup>

- 2nd floor



STAN S-II-4 - 2.KAT					
BR.	OPIS PROSTORIJE	PODNA OBLOGA	KOEF.	PODNA POVRŠINA	NETTO POVRŠINA
1	HODNIK 1	pločice	1,00	5.84 m <sup>2</sup>	5.84 m <sup>2</sup>
2	HODNIK 2	pločice	1,00	13.14 m <sup>2</sup>	13.14 m <sup>2</sup>
3	ISPOD SKALA (h=0.3-1.5 m)	pločice	0,30	2.73 m <sup>2</sup>	0.82 m <sup>2</sup>
3	ISPOD SKALA (h=1.5-2.2 m)	pločice	0,75	1.32 m <sup>2</sup>	0.99 m <sup>2</sup>
3	ISPOD SKALA (h=2.2-2.6 m)	pločice	0,90	0.66 m <sup>2</sup>	0.60 m <sup>2</sup>
4	UTILITY 2	pločice	1,00	2.30 m <sup>2</sup>	2.30 m <sup>2</sup>
5	UTILITY 1	pločice	1,00	1.36 m <sup>2</sup>	1.36 m <sup>2</sup>
6	SPAVAČA SOBA 1	parket	1,00	18.23 m <sup>2</sup>	18.23 m <sup>2</sup>
7	KUPAONICA 1	pločice	1,00	4.92 m <sup>2</sup>	4.92 m <sup>2</sup>
8	SPAVAČA SOBA 2	parket	1,00	18.31 m <sup>2</sup>	18.31 m <sup>2</sup>
9	GARDEROBA	parket	1,00	9.08 m <sup>2</sup>	9.08 m <sup>2</sup>
10	KUPAONICA 2	pločice	1,00	13.15 m <sup>2</sup>	13.15 m <sup>2</sup>
11	SPAVAČA SOBA + GARDEROBA 3	parket	1,00	19.96 m <sup>2</sup>	19.96 m <sup>2</sup>
12	KUPAONICA 3	pločice	1,00	4.71 m <sup>2</sup>	4.71 m <sup>2</sup>
13	SPAVAČA SOBA + GARDEROBA 4	parket	1,00	21.70 m <sup>2</sup>	21.70 m <sup>2</sup>
14	KUPAONICA 4	pločice	1,00	3.82 m <sup>2</sup>	3.82 m <sup>2</sup>
STAN S-II-4 - 2.KAT				141,23 m <sup>2</sup>	138,92 m <sup>2</sup>
STAN S-II-4 - 2. I 3.KAT - TOTAL				301,50 m <sup>2</sup>	260,01 m <sup>2</sup>
STAN S-II-4 - PM 12					38,26 m <sup>2</sup>









ARCHITECT ANTE VRBAN





ARCHITECT ANTE VRBAN



ARCHITECT ANTE VRBAN



ARCHITECT ANTE VRBAN



ARCHITECT ANTE VRBAN



ARCHITECT ANTE VRBAN



ARCHITECT ANTE VRBAN



ARCHITECT ANTE VRBAN



ARCHITECT ANTE VRBAN



ARCHITECT ANTE VRBAN



ARCHITECT ANTE VRBAN



ARCHITECT ANTE VRBAN

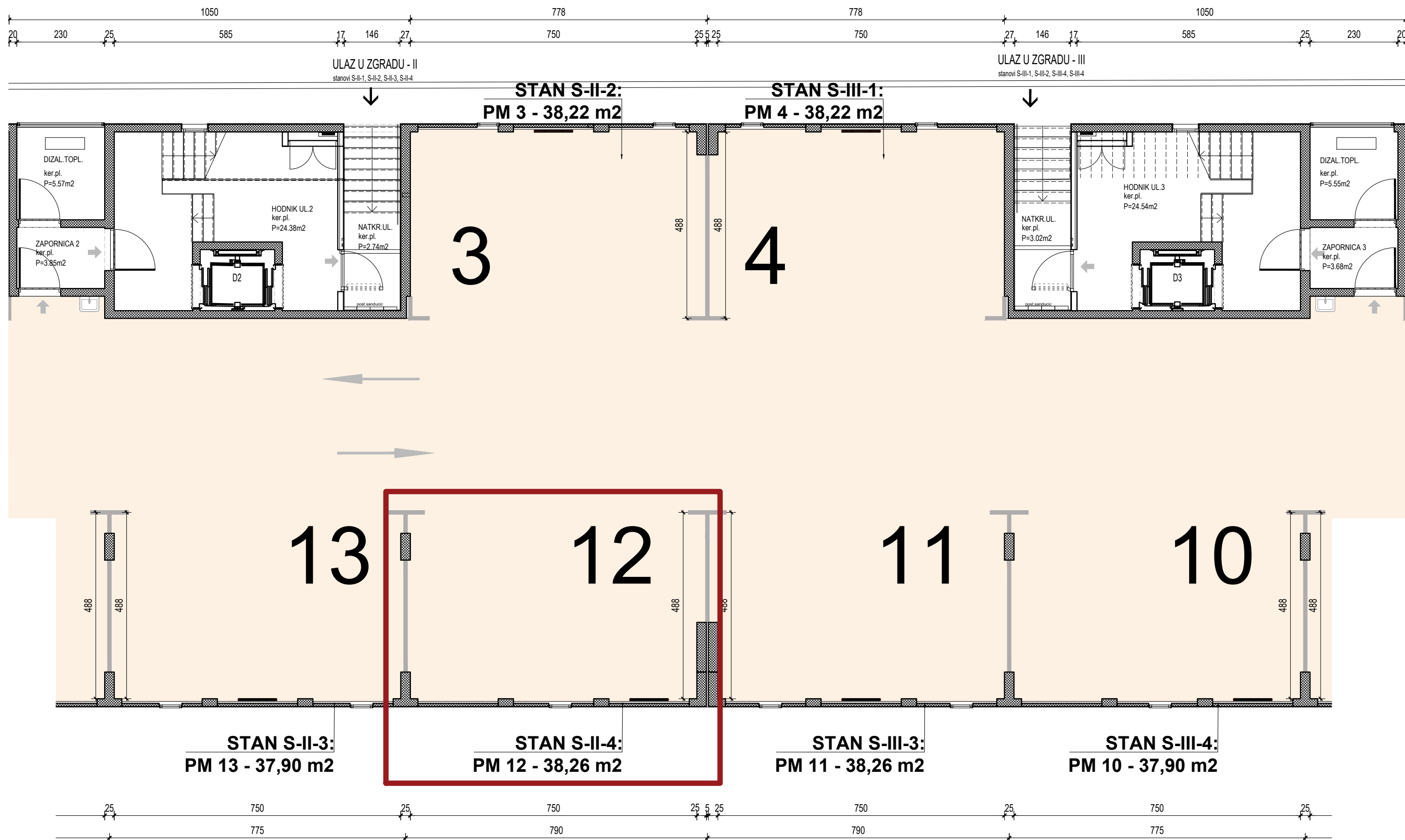


ARCHITECT ANTE VRBAN



ARCHITECT ANTE VRBAN

# GARAGE - PARKING SPACE (PM)





PM 3

PM 4

KA PA 773



PM 3

PM 4



# ARCHITECT ANTE VRBAN

16 Custom Architect Ante Vrban residential interiors

for

BUSINESS RESIDENTIAL BUILDING ROVINJ