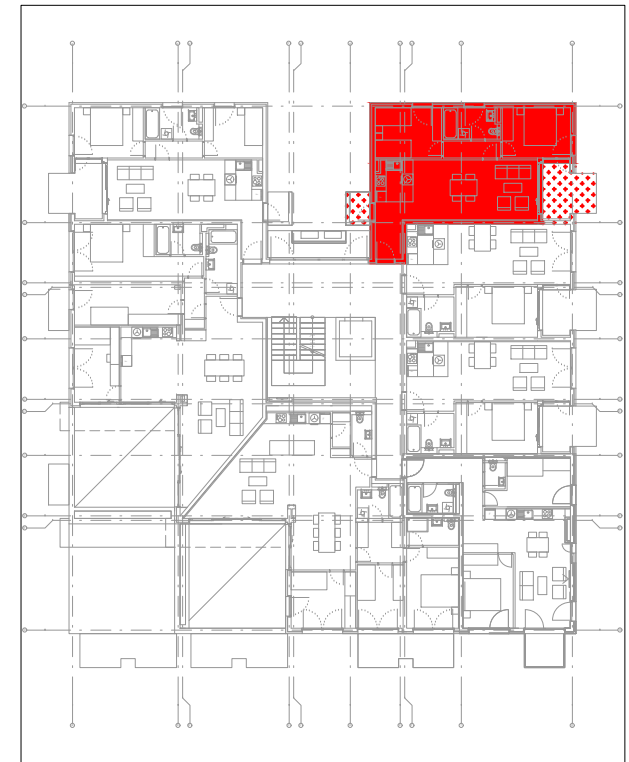
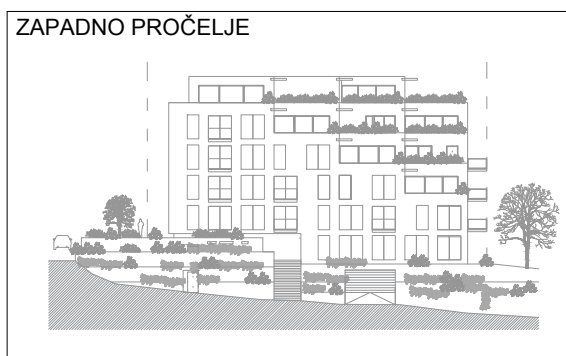
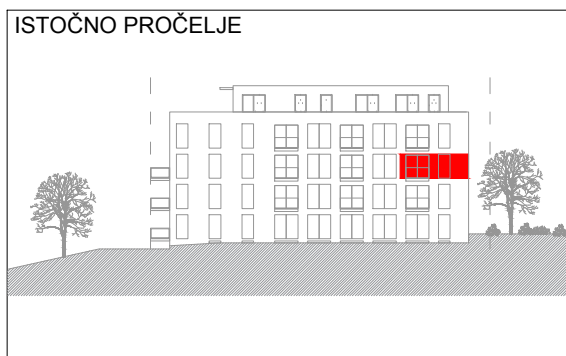
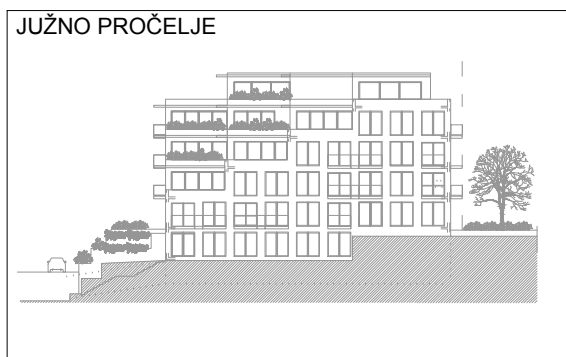
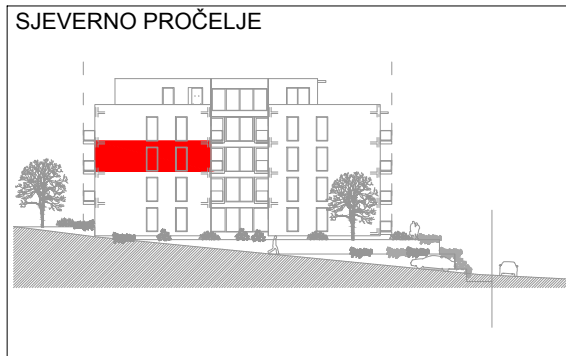


OBJEKT 72 - TRSTENIK RADOŠEVAC

SPLIT 43°50'40" N 16°48'13"E



ETAŽA +22.00_5-07		2s
Ulaz		3.30 m ²
Kuhinja		4.71 m ²
Dnevni boravak+blagovaonica		25.33 m ²
Hodnik		3.04 m ²
Spavaća soba 1		10.64 m ²
Spavaća soba 2		10.36 m ²
Kupaonica 2		5.13 m ²
UKUPNO (ZATVORENI DIO)		62.51 m²
Loda	5.45m2 x0.75	4.09 m ²
Natkriveni balkon 1	2.58m2 x0.50	1.29 m ²
Natkriveni balkon 2	1.90m2 x0.50	0.95 m ²
SVEUKUPNO (bez koeficijentata)		72.44 m²
SVEUKUPNO (sa koeficijentima)		68.84 m²