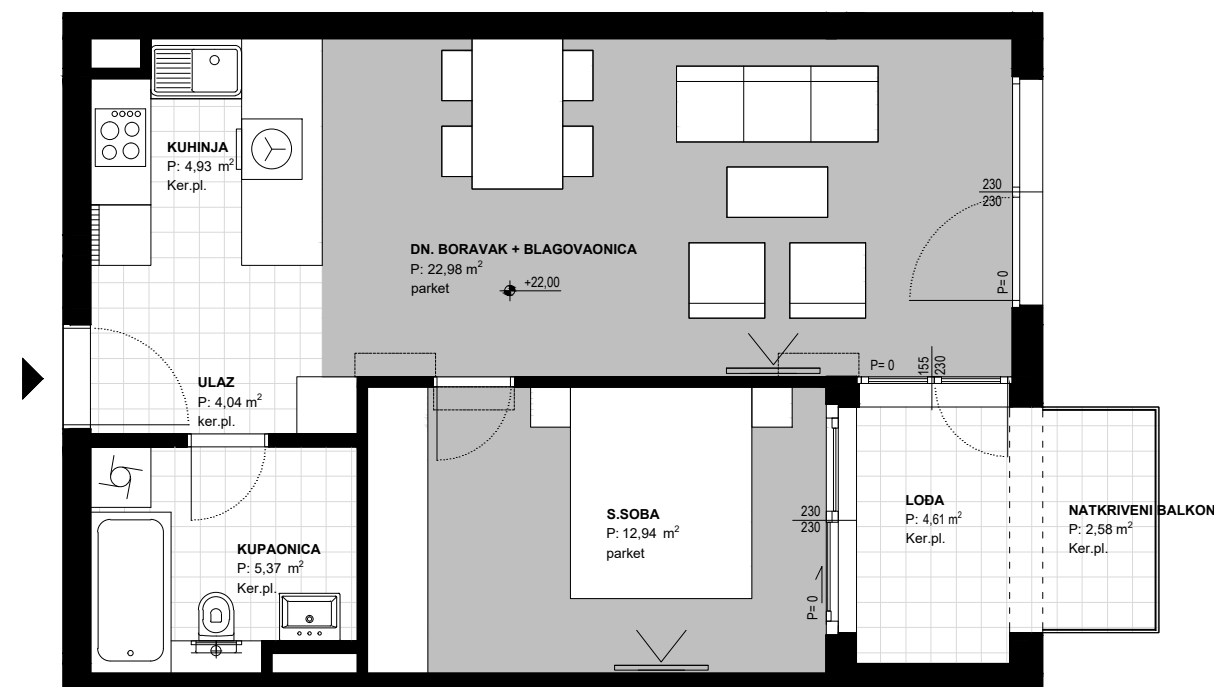
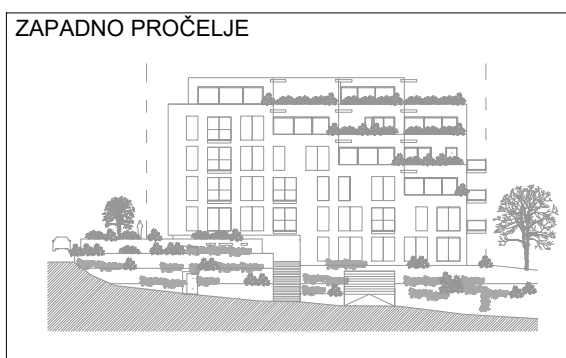
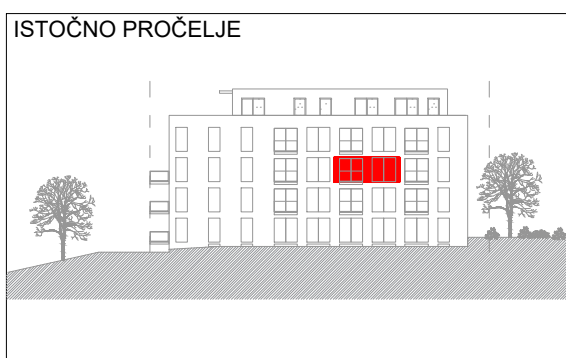
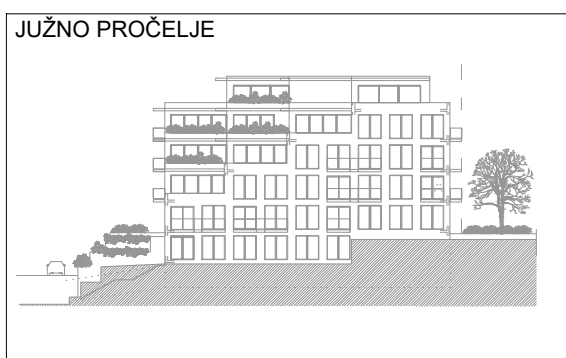
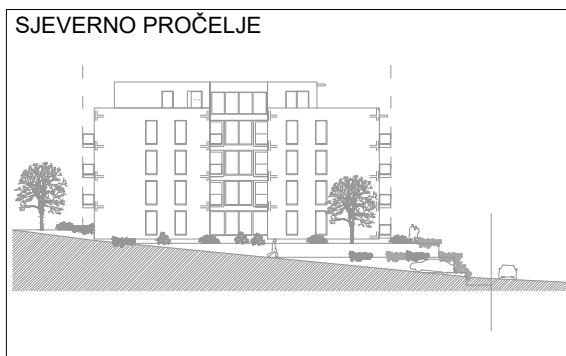


OBJEKT 72 - TRSTENIK RADOŠEVAC

SPLIT 43°50'40" N 16°48'13"E



2

5

10m



ETAŽA +22.00_5-06		1s
Ulaz	4.04	m ²
Kuhinja	4.93	m ²
Dnevni boravak+blagovaonica	22.98	m ²
Spavaća soba	12.94	m ²
Kupaonica	5.37	m ²
UKUPNO (ZATVORENI DIO)	50.26	m²
Lođa	4.61m2 x0.75	3,46 m ²
Natkriveni balkon	2.58m2 x0.50	1,29 m ²
SVEUKUPNO (bez koeficijenata)	57.45	m²
SVEUKUPNO (sa koeficijentima)	55.01	m²