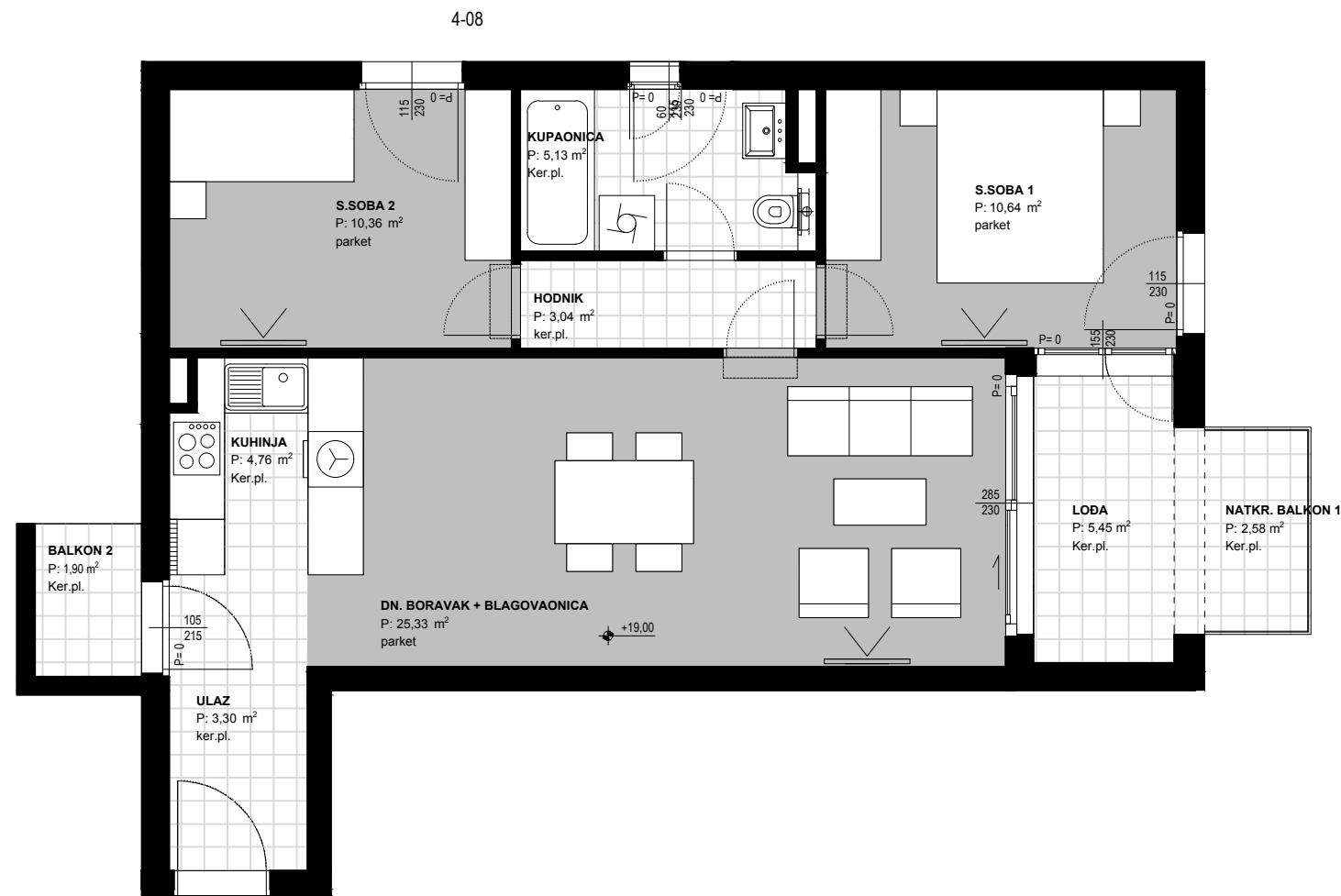
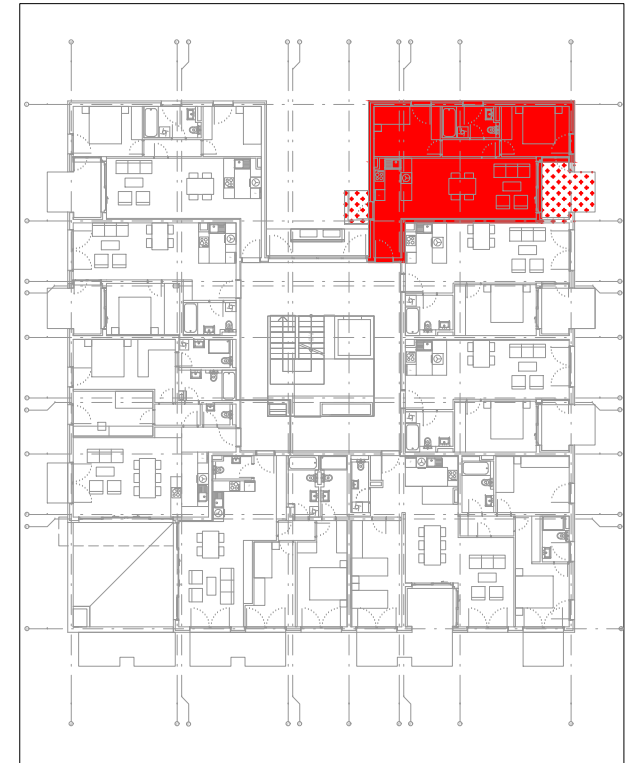
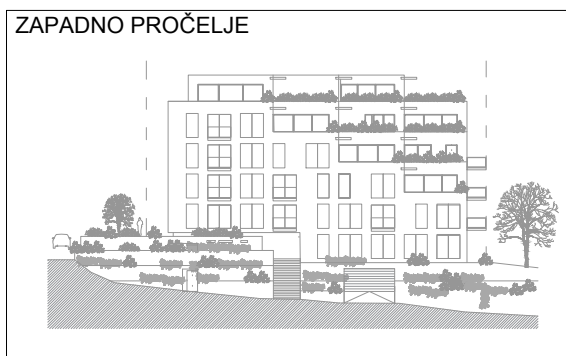
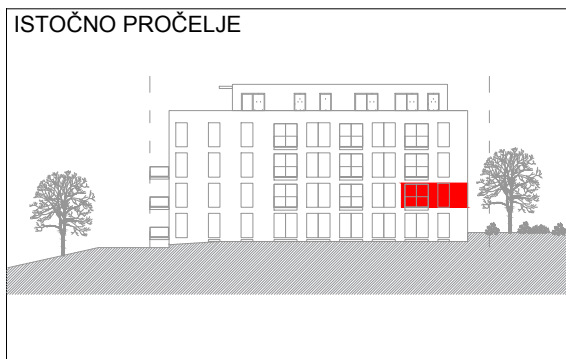
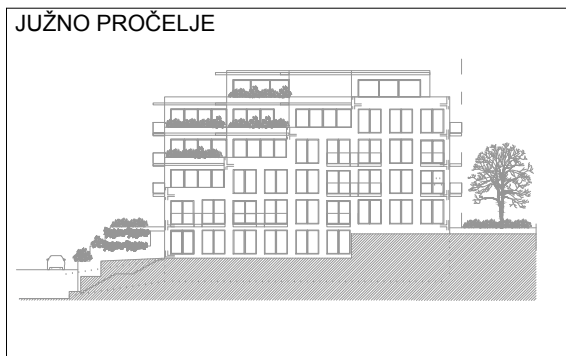
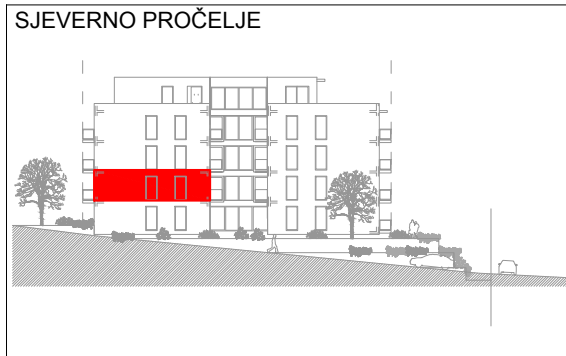


OBJEKT 72 - TRSTENIK RADOŠEVAC

SPLIT 43°50'40" N 16°48'13"E



ETAŽA +19.00_4-08		2s
Ulaz	3.30	m ²
Kuhinja	4.76	m ²
Dnevni boravak+blagovaonica	25.33	m ²
Hodnik	3.04	m ²
Spavaća soba 1	10.64	m ²
Spavaća soba 2	10.36	m ²
Kupaonica 2	5.13	m ²
UKUPNO (ZATVORENI DIO)	62.56	m²
Loda	5.45m2 x0.75	4.09 m ²
Natkriveni balkon 1	2.58m2 x0.50	1.29 m ²
Natkriveni balkon 2	1.90m2 x0.50	0.95 m ²
SVEUKUPNO (bez koeficijenata)	72.49	m²
SVEUKUPNO (sa koeficijentima)	68.89	m²