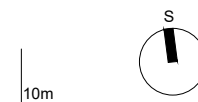
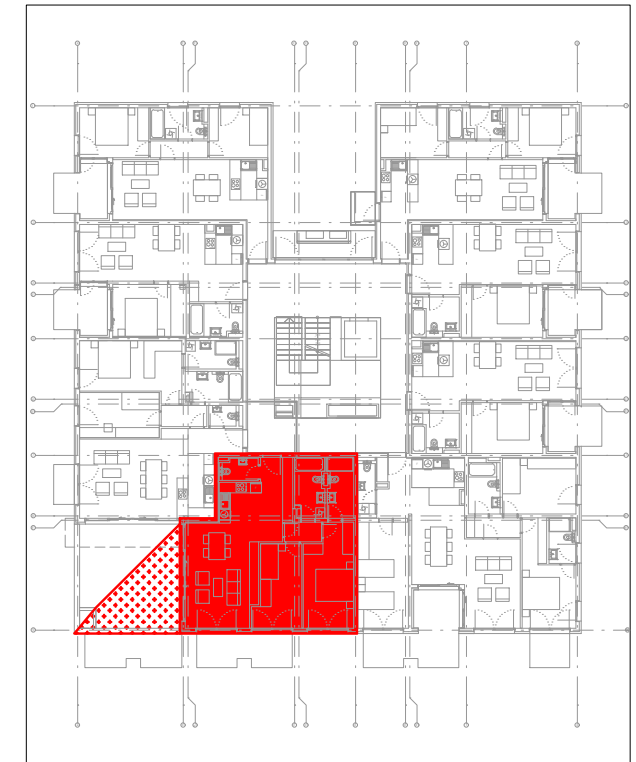
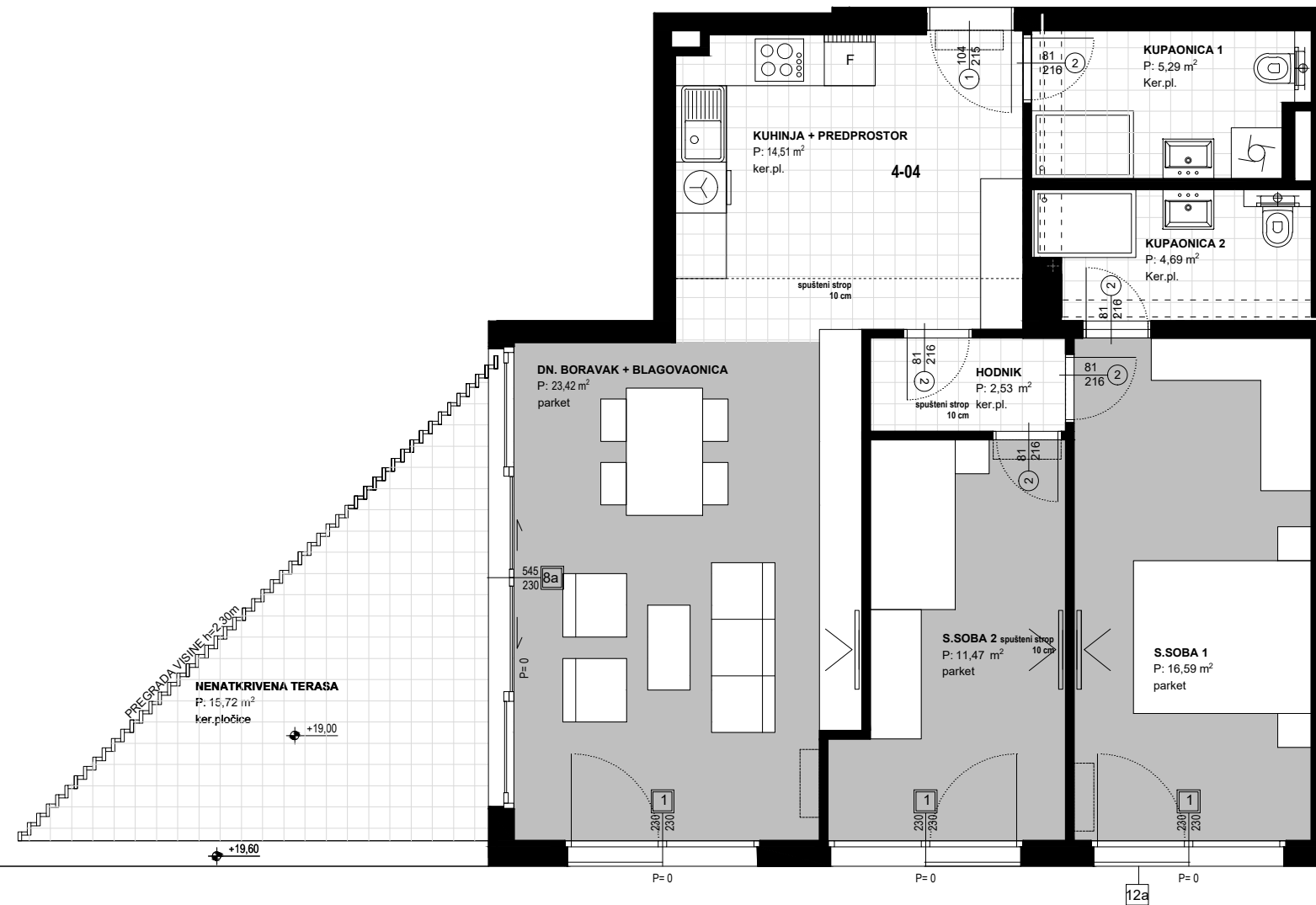
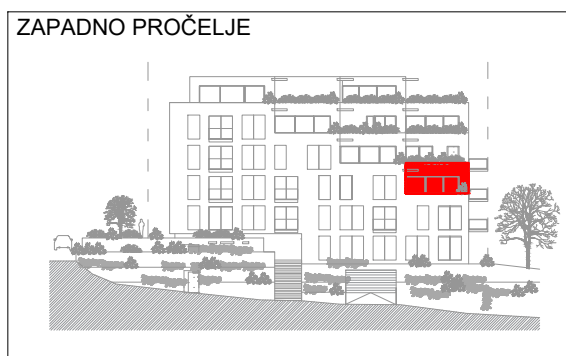
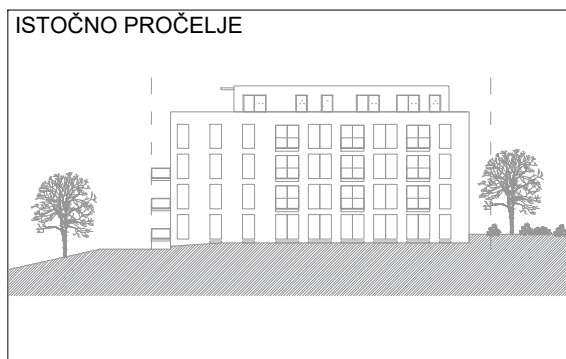
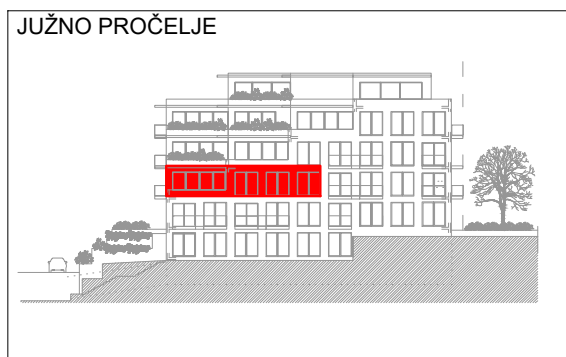
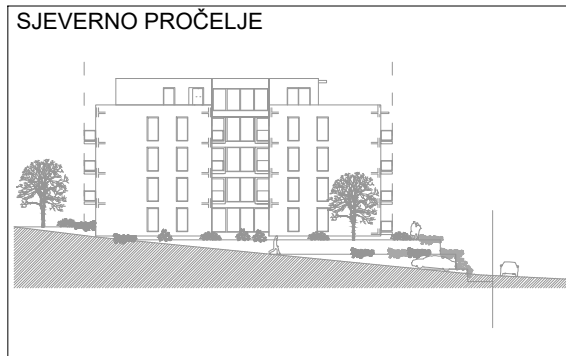


OBJEKT 72 - TRSTENIK RADOŠEVAC

SPLIT 43°50'40" N 16°48'13"E



ETAŽA +19.00_4-04		2s
Dnevni boravak+blagovaonica	23.42	m ²
Kuhinja+predprostor	14.51	m ²
Hodnik	2.53	m ²
Spavaća soba 1	16.59	m ²
Spavaća soba 2	11.47	m ²
Kupaonica 1	5.29	m ²
Kupaonica 2	4.69	m ²
UKUPNO (ZATVORENI DIO)	78.50	m²
Nenatkrivena terasa 15.72m2 x0.25	3.93	m ²
SVEUKUPNO (bez koeficijenata)	94.00	m²
SVEUKUPNO (sa koeficijentima)	82.21	m²