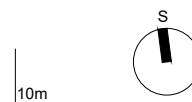
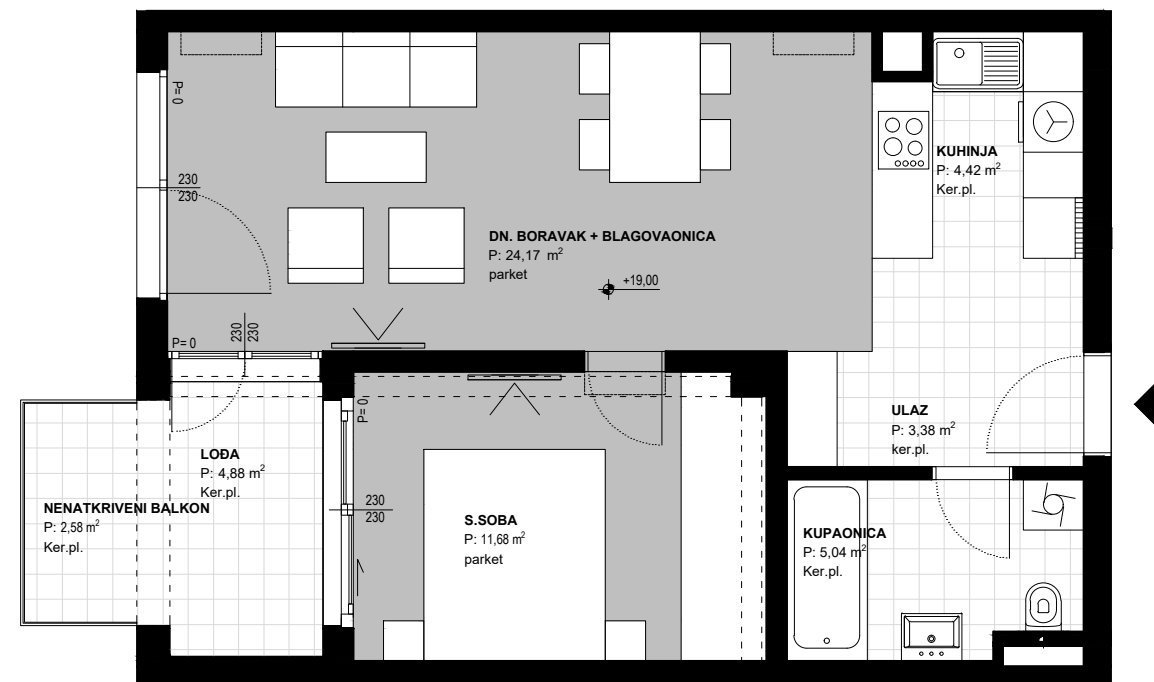
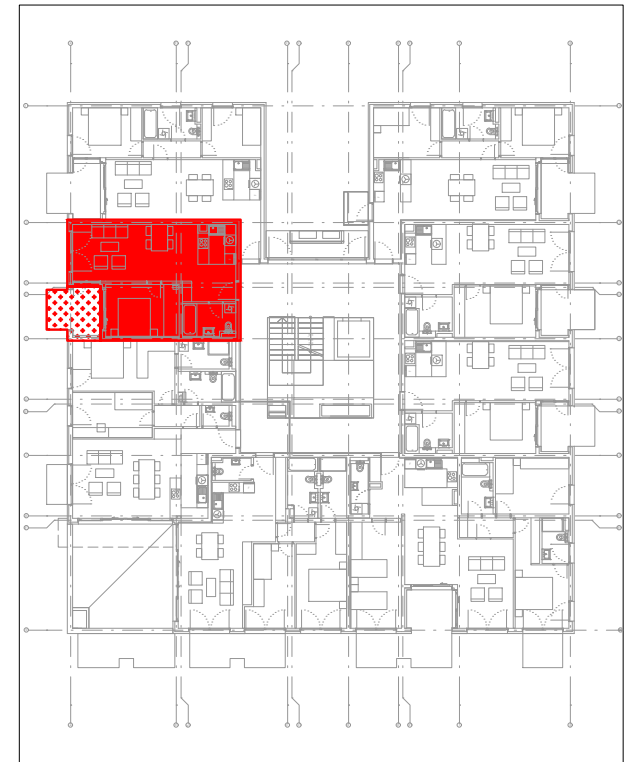
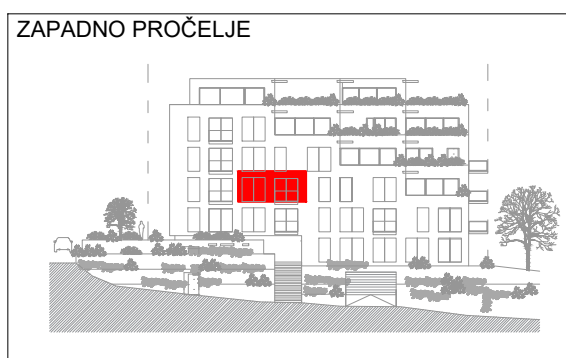
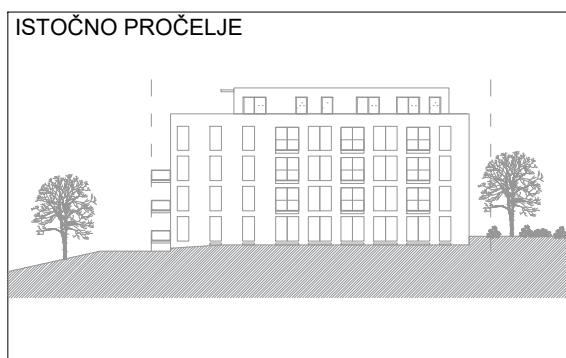
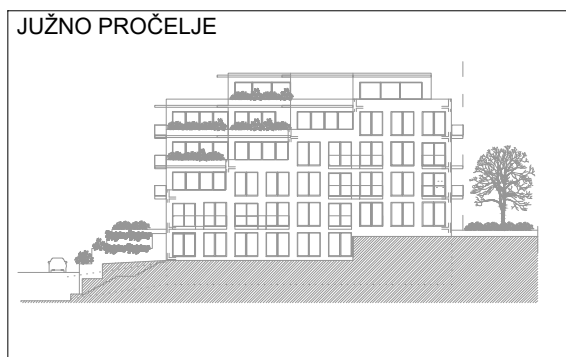
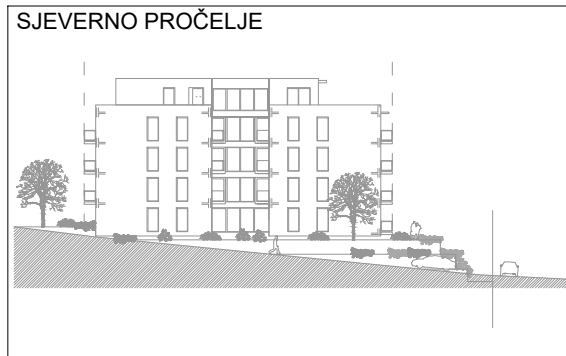


OBJEKT 72 - TRSTENIK RADOŠEVAC

SPLIT 43°50'40" N 16°48'13"E



ETAŽA +19.00_4-02		1s
Ulaz	3.38 m ²	3.38 m ²
Kuhinja	4.42 m ²	4.42 m ²
Dnevni boravak+blagovaonica	24.17 m ²	24.17 m ²
Spavaća soba	11.68 m ²	11.68 m ²
Kupaonica	5.04 m ²	5.04 m ²
UKUPNO (ZATVORENI DIO)	48.69 m²	48.69 m²
Lođa 4.88m2 x0.75	3.66 m ²	3.66 m ²
Nenatkriveni balkon 2.58m2 x0.25	0.65 m ²	0.65 m ²
SVEUKUPNO (bez koeficijenata)	56.15 m²	56.15 m²
SVEUKUPNO (sa koeficijentima)	53.00 m²	53.00 m²