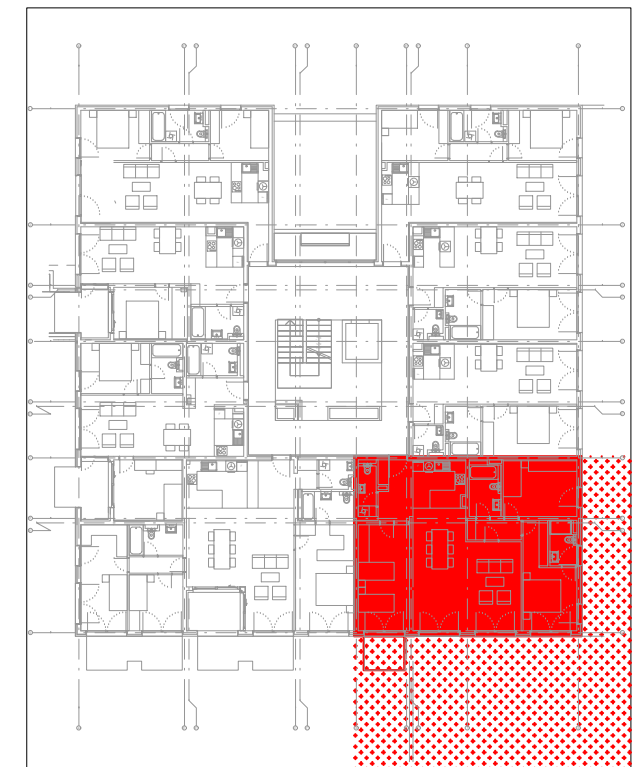
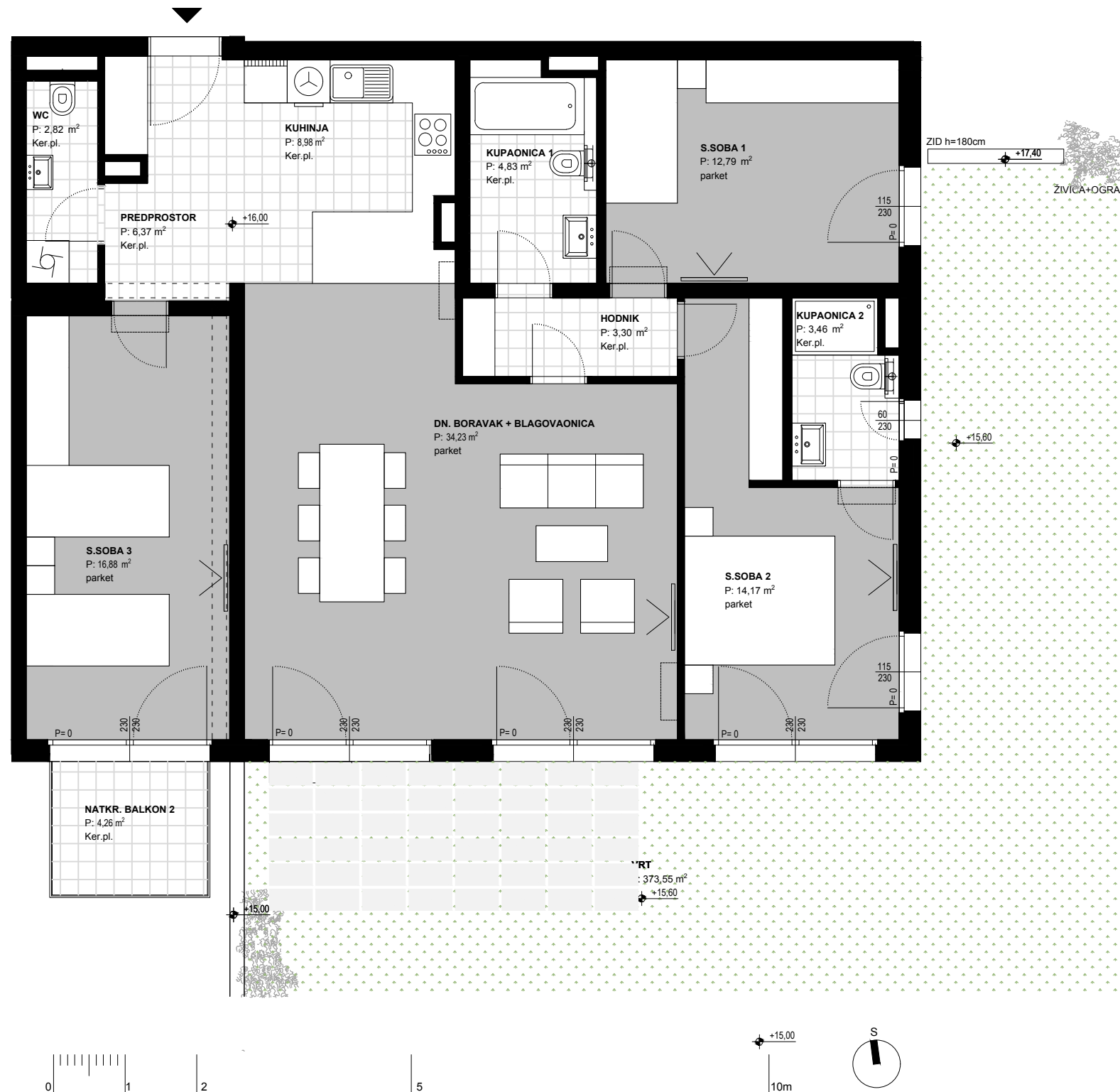
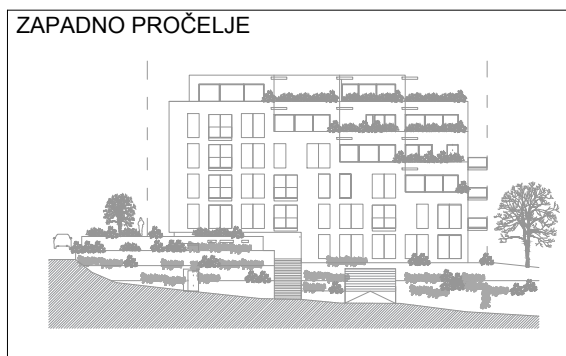
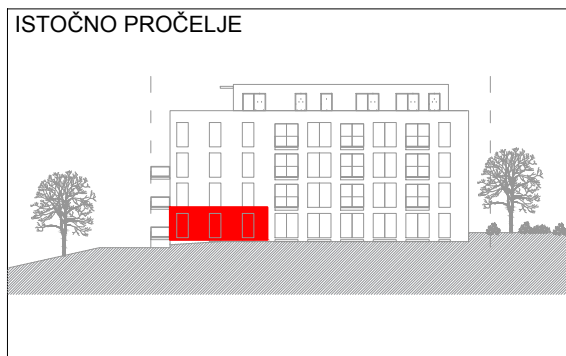
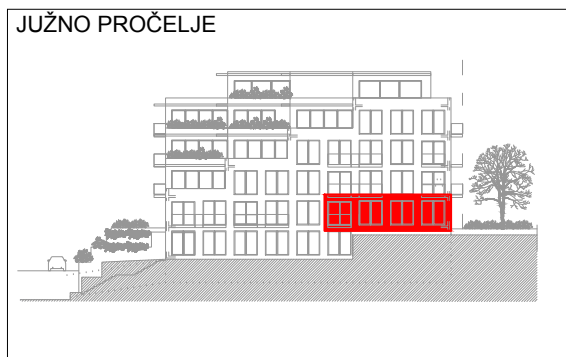
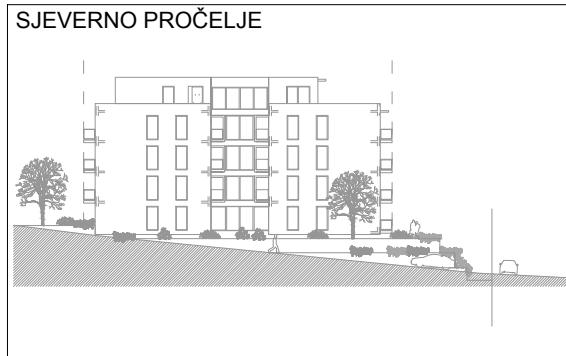


OBJEKT 72 - TRSTENIK RADOŠEVAC

SPLIT 43°50'40" N 16°48'13"E



ETAŽA +16.00_3-05		3s
Predprostor	6.37 m ²	
WC	2.82 m ²	
Kuhinja	8.98 m ²	
Dnevni boravak+blagovaonica	34.23 m ²	
Kupaonica 1	4.83 m ²	
Spavaća soba 1	12.79 m ²	
Hodnik	3.30 m ²	
Spavaća soba 2	14.17 m ²	
Spavaća soba 3	16.88 m ²	
Kupaonica 2	3.46 m ²	
UKUPNO (ZATVORENI DIO)	107.83 m²	
Natkriveni balkon 4.26m2 x0.50	2.13 m ²	
SVEUKUPNO (bez koeficijenta)	112.09 m²	
SVEUKUPNO (sa koeficijentima)	109.96 m²	
Vrt 373,55m2 x0.10	37,35 m ²	
Vrt 22,80m2 x0.10	2,28 m ²	
Vrt horizontalni 263,60 m2	0,00	
Vrt u nagibu 109,95 m2	0,00	

